



Nisichawayasihk Cree Nation Community Land Use Plan

April 27, 2022

A photograph of a winter landscape. In the foreground, there is a snow-covered field with some bare, thin branches. In the middle ground, there is a line of evergreen trees. The background shows a clear blue sky with a few wispy clouds. The image is partially obscured by a dark grey curved shape on the right side, which contains the text.

Overview

- The Nisichawayasihk Cree Nation's Land Use Plan is organized into seven parts.
 1. Introduction
 2. Development of the Plan
 3. Community Vision and Goals
 4. Land Use Designations
 5. Land Use and Development Guidelines
 6. Monitoring and Review
 7. Mapping

Introduction



The NCN Land Use Plan provides guidance to all NCN community members, NCN Lands, Environment, and Resources (LER) Department and potential developers to related to development and land use



The guidelines will ensure that everyone is treated fairly and to ensure that NCN lands are developed responsibly and with consideration for future generations.



The Lands, Environment, and Resource Department will be the central resource for all matters related to the Land Use Plan.

Development of the Plan

- Land Use Planning Team:
 - NCN's LER Department
 - Lands Advisory Committee
 - Portfolio Councillors for LER, Housing and Infrastructure
 - Seven Feathers Consulting
 - Shared Value Solutions
- From September 2020 – December 2020 completed a total of 249 surveys representing 49% of all households in NCN.
- The Lands Planning Team hosted three community meetings with focus groups:
 - October 2020 – Norman Linklater Memorial Multiplex
 - June 2021 – Gilbert McDonald Arena Mezzanine
 - September 2021 – Norman Linklater Memorial Multiplex

Community Vision and Goals

COMMUNITY GOAL	GOAL CHARACTERISTICS
Goal 1: Governance Structure and Leadership	<ul style="list-style-type: none">➤ Governance fundamentals rooted in communication, trust and accountability➤ Leadership will be sound, organized and evolving to improve adaptability and responsiveness to NCN community needs➤ Governance will be rooted in Othasowewin (Our Constitution) to uphold Kihche'othasowewin (Supreme Law of the Land)
Goal 2: Lands Management	<ul style="list-style-type: none">➤ Abide by our Land Code that affirms NCN's authority to make decisions about how we use our lands➤ Respect and incorporate our customary and contemporary land uses that also align with our responsibilities to protect the environment
Goal 3: Economic Development	<ul style="list-style-type: none">➤ Identify environmentally sustainable economic developments that align with our Strategic Plan to support long-term economic stability for our citizens and enhance self-sufficiency
Goal 4: Community Safety and Well-Being	<ul style="list-style-type: none">➤ Promote healthy families and communities through collaboration between our community services, integrating education and awareness into social programming and ensuring that our citizens are protected and supported
Goal 5: Traditional Knowledge	<ul style="list-style-type: none">➤ Continue to embrace our diversity and long cultural history that informs who we are a First Nations People➤ Ensure that our actions preserve and celebrate the blessings of the Creator and the teachings passed on by our ancestors to ensure we are on the path to Nehetho
Goal 6: Environmental Protection	<ul style="list-style-type: none">➤ Establish a strategic Environmental Management Plan (EMP) that incorporates our treaty rights to manage, protect, preserve and monitor NCN lands and waters while enhancing and teaching NCN citizens way of life and culture
Goal 7: Community Wellness and Food Security	<ul style="list-style-type: none">➤ Enhancing health care programs, facilities and services through greater collaboration within NCN agencies to support the well-being of citizens, of all ages
Goal 8: Transparency, Accountability and Community Involvement	<ul style="list-style-type: none">➤ Fiscal responsibility implemented at all levels of NCN government➤ Appropriate communication with community members and transparency in decisions

Land Use Designations

DESIGNATION	DEFINITION	EXAMPLES
Agriculture	These areas are where growing food and other plants and raising animals or livestock could occur.	Community gardens, year-round greenhouses, forestry
Public Facilities	Areas for facilities that provide important services to our Citizens and areas for Nisichawayasi Nehethowuk (our people) to use for recreation and cultural activities.	Schools, training centres, land-based camps, policing, health and support services/centres, care homes, treatment centres, shelters, administrative buildings, recreation centres, parks
Residential	Areas for future residential infrastructure as our community grows over time and to address current housing shortages to help ensure that as our community grows, we will have adequate space to house our families while still respecting the environment.	Single-detached housing, semi-detached and town-houses, medium- to high-density apartments, home-based businesses, parks, playgrounds
Commercial	Areas where small and large businesses can be established to support our local entrepreneurs, NCN-owned and operated businesses and to establish desired external services like banks and chain restaurants.	Restaurants, coffee shops, craft stores, gyms, tourist services, and other businesses
Industrial	Areas that can be used for activities that may interfere with or not be compatible with other uses (such as residential) because they make noise or produce dust, odours, or emissions.	Temporary construction camps, gravel pits/quarries, manufacturing facilities, saw mills, energy production, renewable energy facility, recycling facility
Cultural-Ceremonial	Areas designated for holding cultural and ceremonial activities.	Lodges, Pow Wow harbour, medicine areas, Dancing Circles, heritage sites
Cemeteries and Burial Sites	Areas designated to protect and preserve existing marked and unmarked burial grounds as well as existing graveyards.	Burial grounds, graveyards, repatriated sites
Protected Lands	Areas that are important ecological zones and/or protect our Citizens' ability to practice cultural and recreational activities.	Traditional and cultural activities, medicine and other plant harvesting, hunting, trapping, swimming, fishing, camping, recreational activities, ATV trail use, pedestrian trail use
Operations	Places where activities for maintaining and managing NCN infrastructure, vehicles, and public services will occur.	Garage, vehicle compound, NCN infrastructure and maintenance support facilities, water treatment plant, recycling facility, wastewater treatment plant, solid waste transfer station

Land Use Development Guidelines

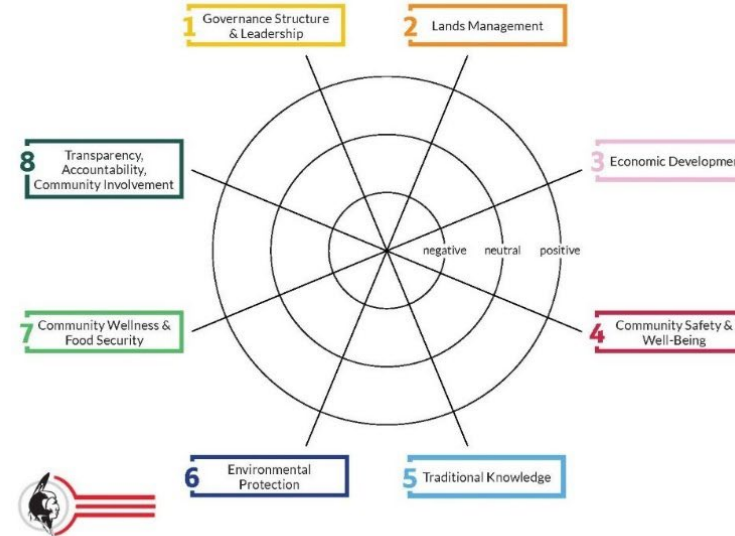
1. **Cultural and Environmental Guidelines:** informed by our Traditional and Natural Laws that help guide how we should make decisions about our lands and waters, protect cultural and environment
2. **Development Guidelines:** approving developments and/or buildings on our land, including residential developments, support us with planning and approving developments in our community in a way that protects the health and wellbeing of our Citizens.
3. **Parks, Trails and Active Transportation Guidelines:** standards for our parks, trails and active transportation routes that will support our goals for building healthy and accessible neighbourhoods that secure the safety and well-being of our community.
4. **Infrastructure Guidelines:** general processes for managing water, wastewater, stormwater/drainage, and transportation. These guidelines were informed by existing concerns from Citizens and will aim to support infrastructure that is effective and trustworthy to ensure the safety and wellbeing of our Citizens and N'tuskenan (our sacred land).

Decision Making

- Decision-making matrix is a tool for guiding land use decisions.
- The decision-making matrix provides us with a process for making decisions that aligns with our customary laws, principles and values.

NISICHAWAYASIIHK CREE NATION DECISION-MAKING MATRIX

NAME OF PROPOSED
DEVELOPMENT OR ACTION: _____



DOES THE DEVELOPMENT OR ACTION...

- Governance Structure & Leadership**
 - uphold Kihche'othasowewin (the Supreme Law of the Land)?
 - support our Constitution and its framework for governance?
- Lands Management**
 - support our traditional land uses?
 - uphold the responsibilities assigned to NCN government employees, as outlined in our Land Code?
- Economic Development**
 - enhance self-sufficiency and reduce dependencies?
 - support environmentally sustainable economic development?
- Community Safety & Well-Being**
 - promote healthy families and healthy communities?
 - support social programming and community services?
- Traditional Knowledge**
 - incorporate Nehetho legend, cultural practices or ceremonies?
 - include consulting our Elders (kehtiyatisak) for their wisdom?
- Environmental Protection**
 - promote managing, protecting, preserving or monitoring NCN lands and waters?
- Community Wellness & Food Security**
 - enhance community health care programs, facilities or services?
 - promote food security for NCN Citizens?
- Transparency, Accountability, Community Involvement**
 - include community consultation?
 - promote fiscal responsibility?

Monitoring and Review

- This land use plan will be reviewed by the LER Department regularly and with frequent consultation with Chief and Council as well as our community.
- We will formally review the NCN Land Use Plan every five years and as the plan is implemented, we may extend the duration between each review.

Mapping

- Land Use Designations Map – NCN areas that have been designated under one of the land use designations.

**NISICHAWAYASIIHK
CREE NATION**

**Land Use Plan
Designations
Map A**

- Area 7 Roads
- Area 7 Lots
- NCN Areas
- NCN Reserve 170
- Land Use Designations**
- Commercial
- Industrial
- Legacy Issue
- Operations
- Protected
- Public Facilities
- Residential

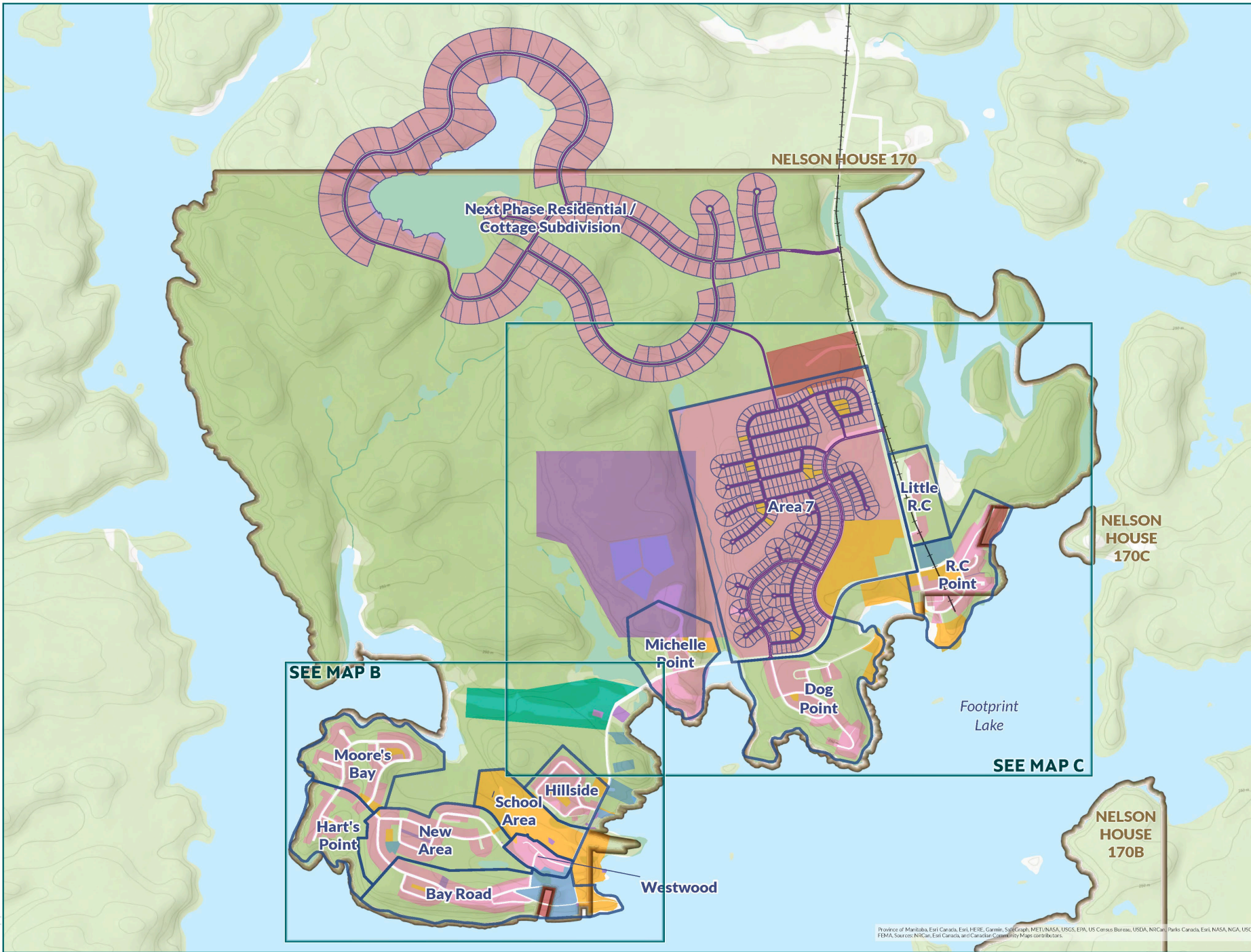
This map may not be reproduced
without the express written consent of
Nisichawayasihk Cree Nation.



Data Sources
Nisichawayasihk Cree Nation, Stantec, Esri

Spatial Reference
Name: NAD 1983 UTM Zone 14N
Datum: North American 1983
Projection: Transverse Mercator

Date: May 19, 2022



Province of Manitoba, Esri Canada, Esri HERE, Garmin, Swg, Graph, METI/NASA, USGS, EPA, US Census Bureau, USDA, NRCan, Parks Canada, Esri, NASA, NGA, USGS, FEMA, Sources: NRCan, Esri Canada, and Canadian Community Maps contributors.

Land Use Plan Designations Map B

- This map may not be reproduced
without the express written consent of
Nisichawayasihk Cree Nation.



Data Sources
Nisichawayasihk Cree Nation, Stantec, Esri

Spatial Reference
Name: NAD 1983 UTM Zone 14N
Datum: North American 1983
Projection: Transverse Mercator

Date: March 23, 2022



Province of Manitoba, Esri Canada, Esri, HERE, Garmin, SafeGraph, METI/NASA, USGS, EPA, US Census Bureau, USDA, NRCan, Parks Canada, Esri, GEBCO, DeLorme, NaturalVue, Sources: Esri, Airbus DS, USGS, NGA, NASA, CGIAR, N. Robinson, NCEAS, NLS, OS, NIMA, Geodatasyndes, Rijkswaterstaat, CSA, Geodan, FEMA, Internat and the GIS user community, Esri, Garmin, GEBCO, NOAA NGDC, and other contributors, Esri, Garmin, FAO, NOAA, EPA, NRCan, Parks Canada, Sources: NRCan, Esri Canada, and Canadian Community Maps contributors. Sources: Esri, HERE, Garmin, GEBCO, National Geographic, NOAA, and the GIS User Community

NISICHAWAYASIIHK CREE NATION

Land Use Plan Designations Map C

- Area 7 Roads
- Area 7 Lots
- Area 7 Comm
- NCN Areas
- NCN Reserve 170

Land Use Designations

- Commercial
- Industrial
- Legacy Issue
- Operations
- Protected
- Public Facilities
- Residential

This map may not be reproduced
without the express written consent of
Nisichawayasihk Cree Nation.



0 100 200 400 m
Scale: 1:11,000



Data Sources

Nisichawayasihk Cree Nation, Stantec, Esri

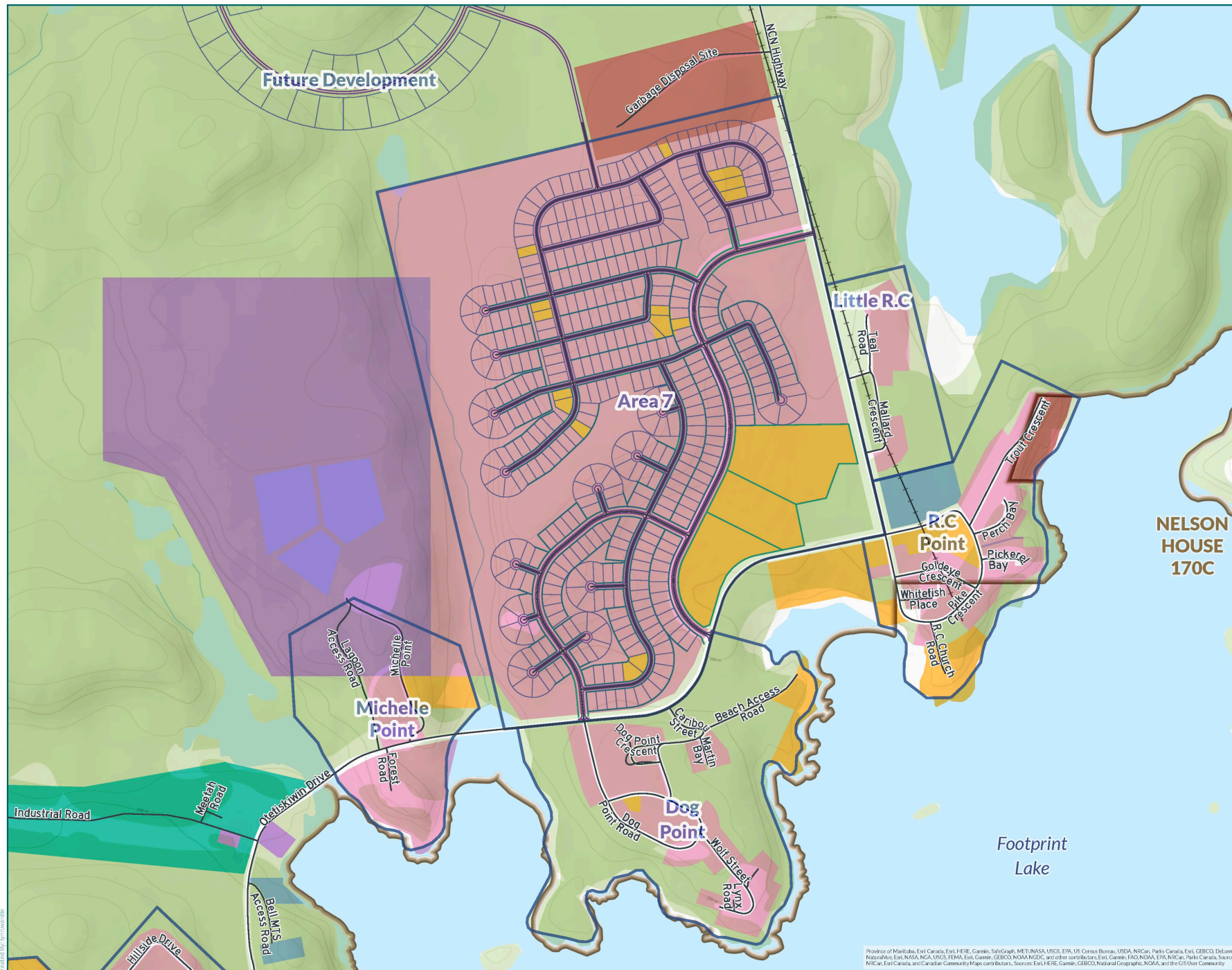
Spatial Reference

Name: NAD 1983 UTM Zone 14N
Datum: North American 1983
Projection: Transverse Mercator

Date: March 23, 2022



SHARED VALUE
SOLUTIONS



Province of Manitoba, Esri Canada, Esri HERE, Garmin, SafeGraph, METANASA, USGS, EPA, US Census Bureau, USDA, NISCan, Parks Canada, Esri, GEBCO, Delorme, Natural Resources Canada, Esri, NASA, NOAA, USGS, FEMA, Esri, Garmin, GEBCO, NOAA, NODC, and other contributors, Esri, Garmin, Esri, NOAA, EPA, NISCan, Parks Canada, Sources: NISCan, Esri Canada, and Canadian Community Map contributors. Sources: Esri, HERE, Garmin, GEBCO, Natural Resources Canada, NOAA, and the US User Community.

Copyright © 2022 Esri

Steps for Using the Land Use Plan

